

6. OTHER EQUIPMENTS

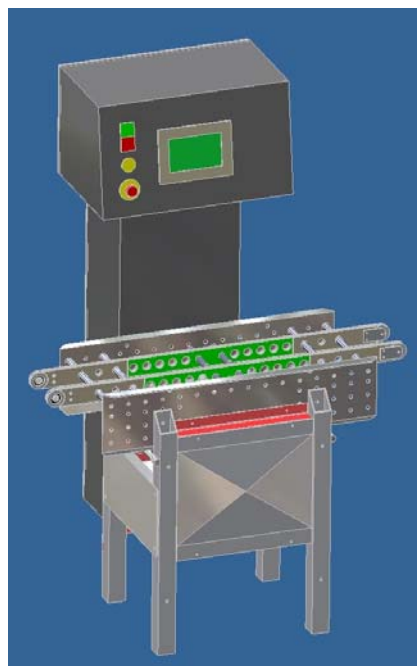
• BALANCE BELT	6.2
• STAMPING	6.3
• RETRACTABLE BELT	6.4
• GLAZE MACHINE	6.5
• SEALING HEAD	6.6
• PRODUCT GRIP WRENCH	6.7
• AUTOMATIC POWDER DISPENSER	6.9
• PIPING THROAT COCK	6.10
• DASHER	6.11
• PRODUCT TRANSPORT PLATES	6.12
• RACK SHELF & PALLETS	6.13
• PRESSING GROUP	6.14
• BISCUIT LINER UP	6.14
• CONES CLENCHER	6.15
• PERCUSSION HAMMER SHAKE PRODUCT	6.15
• CHOCOLATE FILTER	6.16
• DRY COATER	6.16
• BEARINGS FIXING MACHINE	6.17
• DIPPING TUB	6.17
• SELECTIVE LASER FUSION (SLM)	6.18

BALANCE BELT



This equipment is fit to weigh a product in movement on a line of production, equipped of cell of load for the weighing, she is managed completely from a control that it allows to plan the weight and the pleasant tolerance.

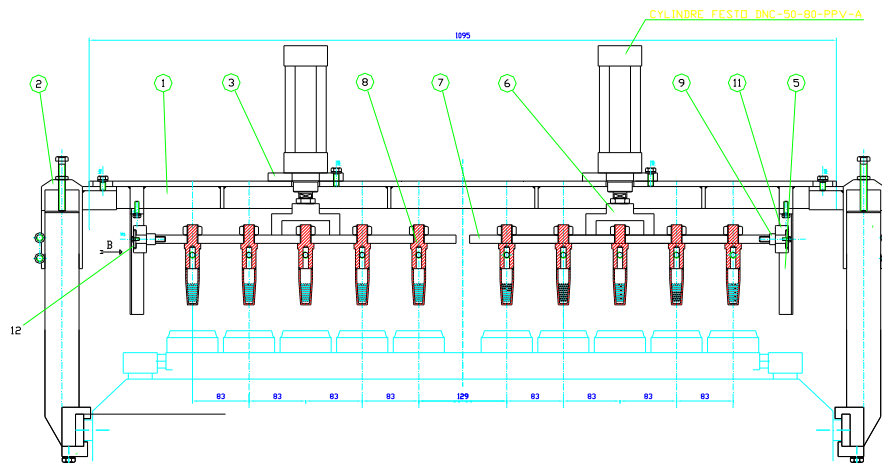
With a speed of tested production up to 60 shots/1s' with a 99% efficiency.



STAMPING



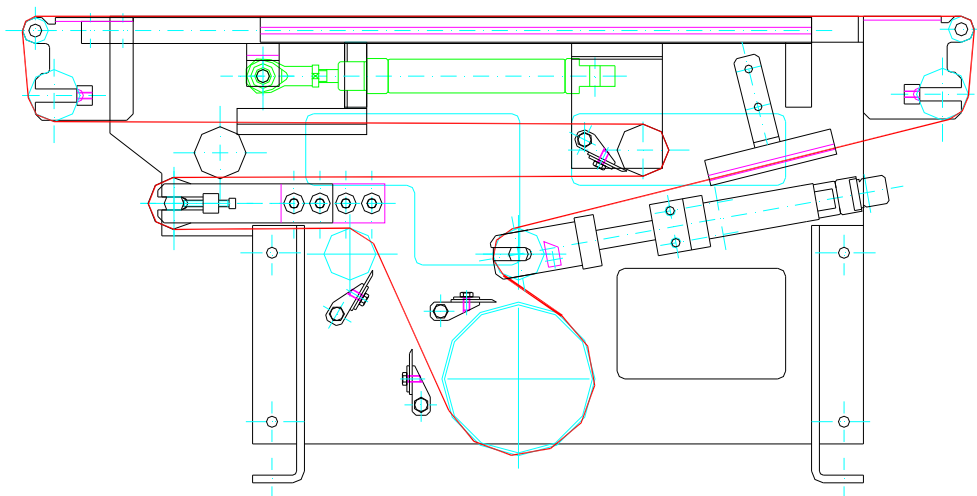
This equipment is fit to practise an imprint in the mixture with aid of sanitary air, that will be filled then by other taste. Completely pneumatic, with a speed of tested production up to 75 shots/1s' with a 99 efficiency%.



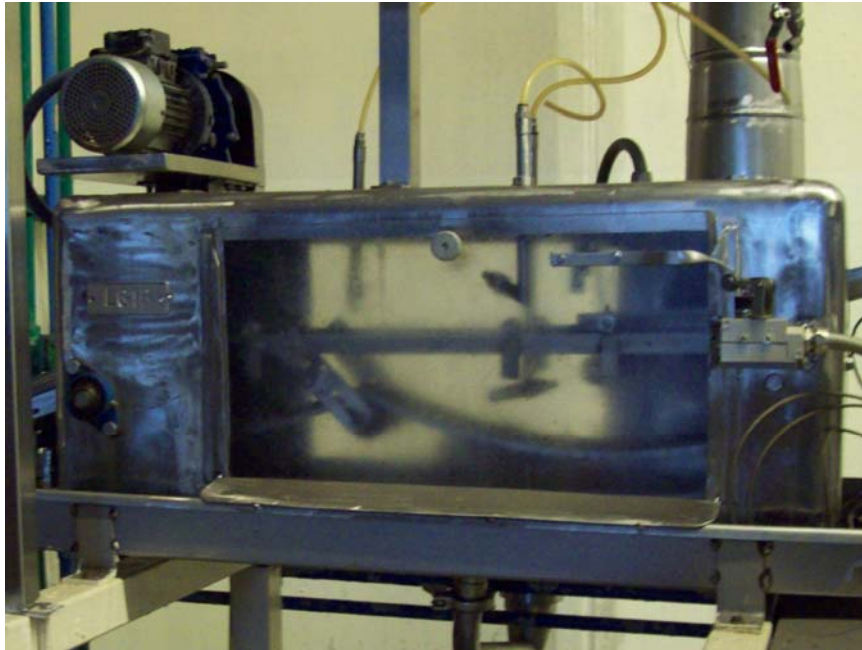
RETRACTABLE BELT



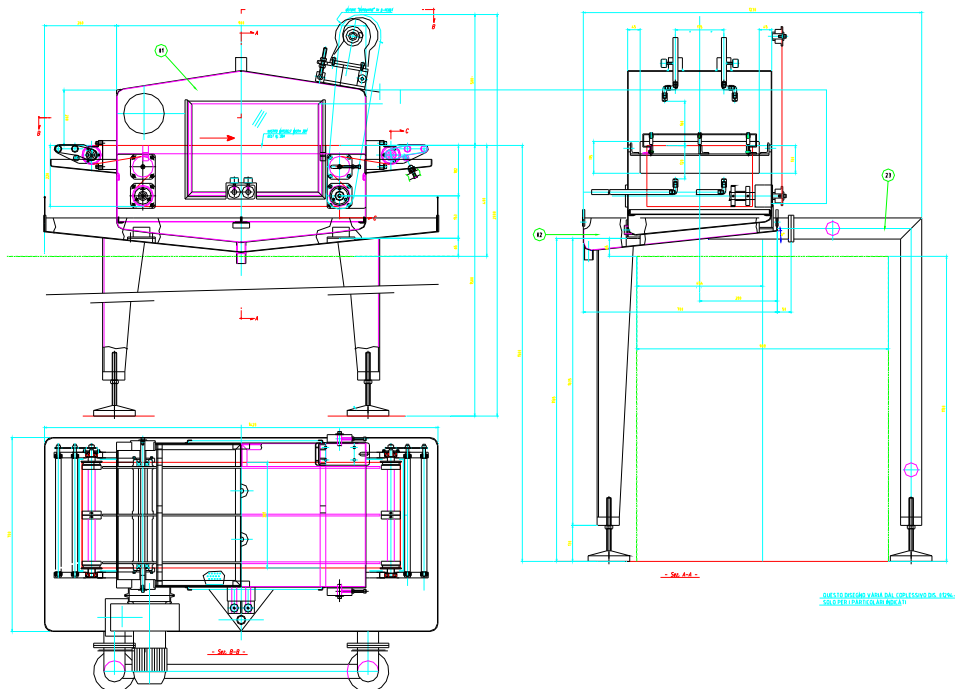
This belt has the possibility to withdraw himself with a command to a pneumatic piston, leaving the belt in movement



GLAZE MACHINE



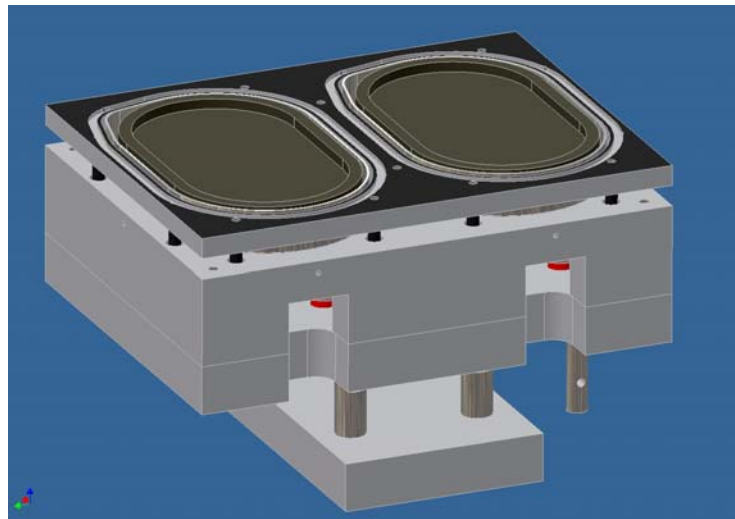
This equipment is fit to the glazing with oil of products that they walk in continuous on ribbon.
With sprinklers and open chain



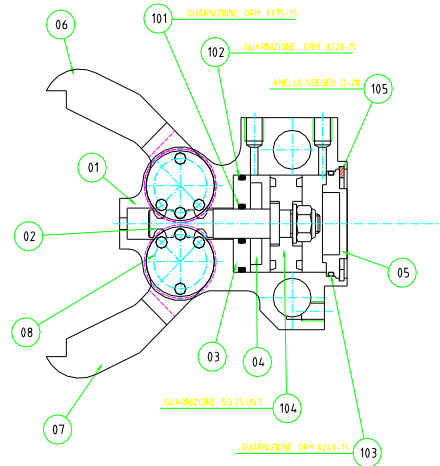
SEALING HEAD



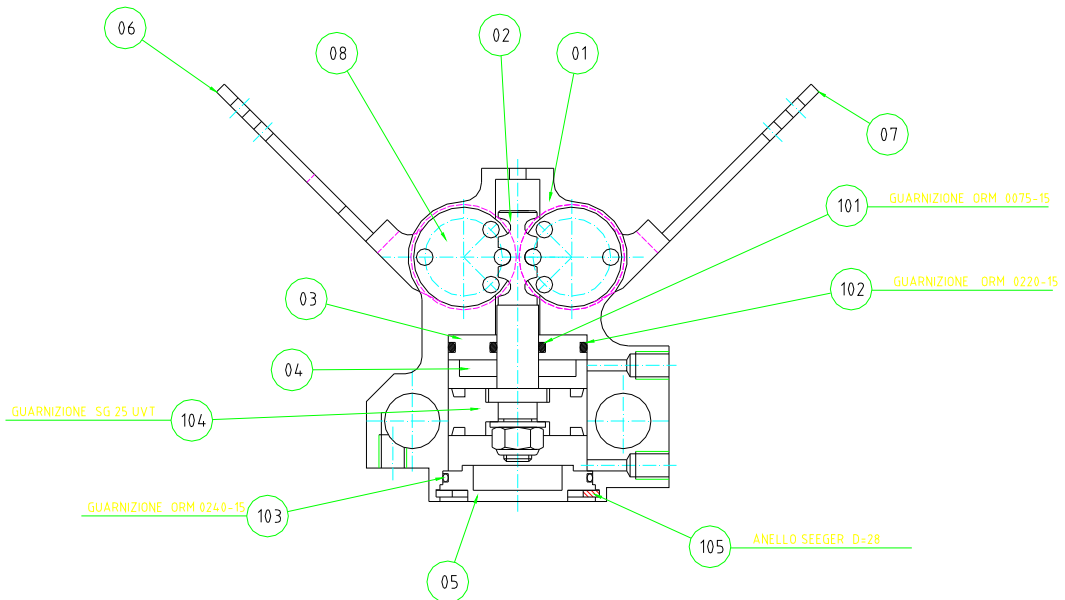
This equipment is fit to the thermo sealing of containers on which it is anticipated film of closing

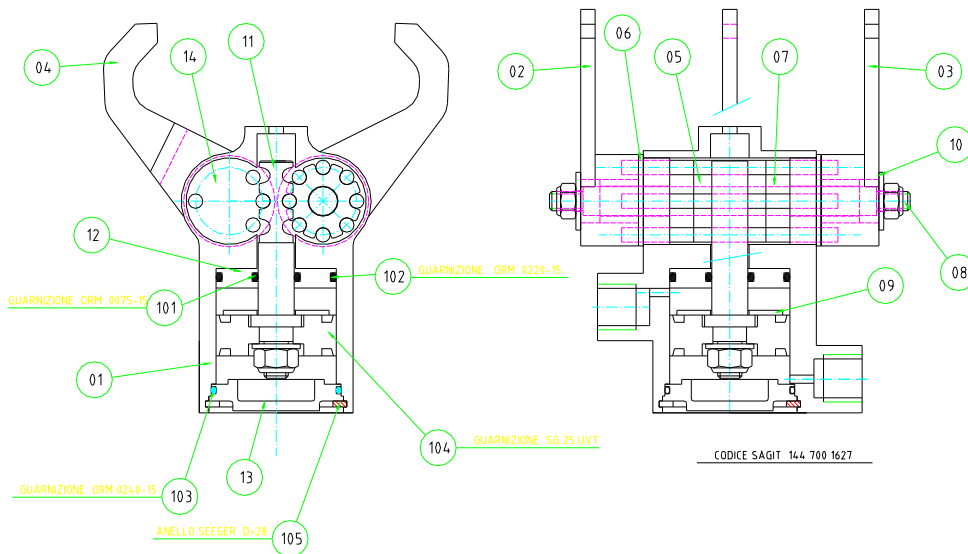
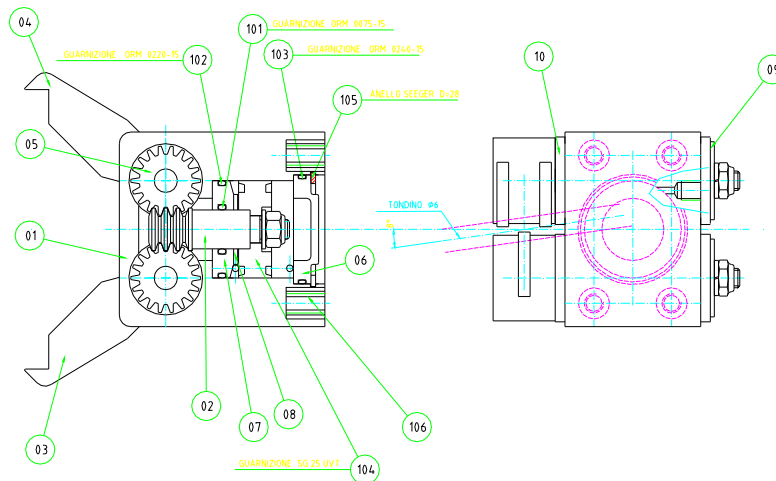
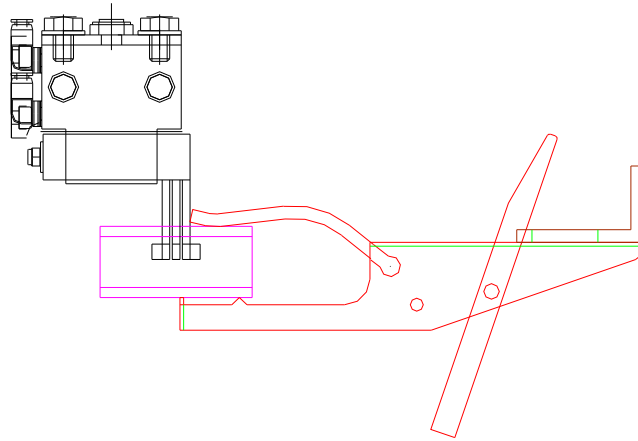


PRODUCT GRIP WRENCH

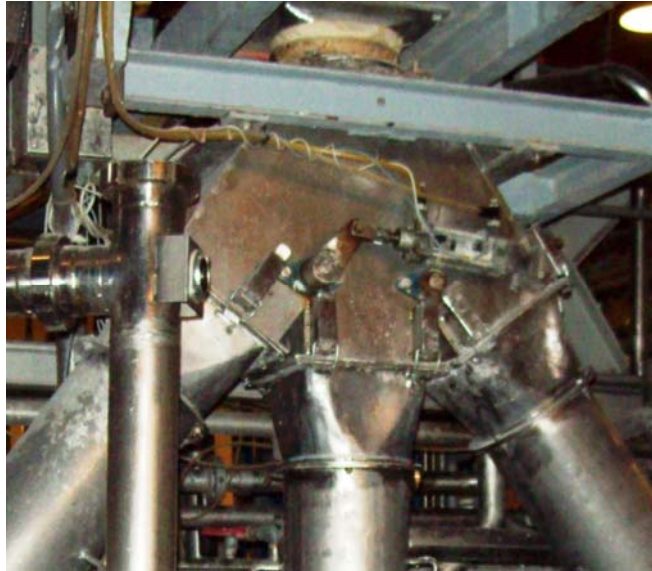


These pneumatic pliers are fit to withdraw any naked product

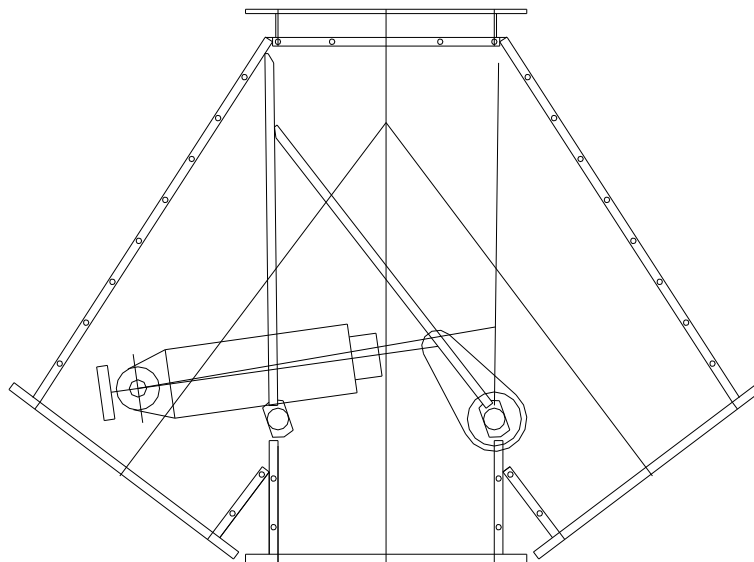




AUTOMATIC POWDER DISPENSER



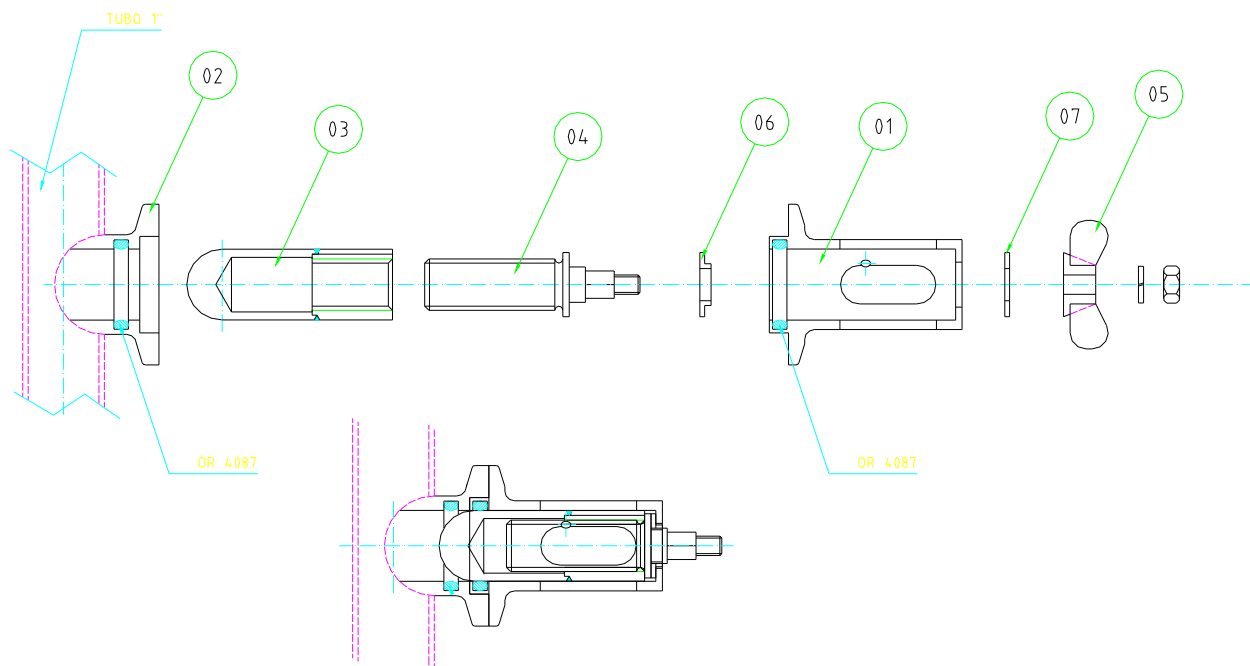
This equipment is fit to the dosing of dusts with switchmen inside



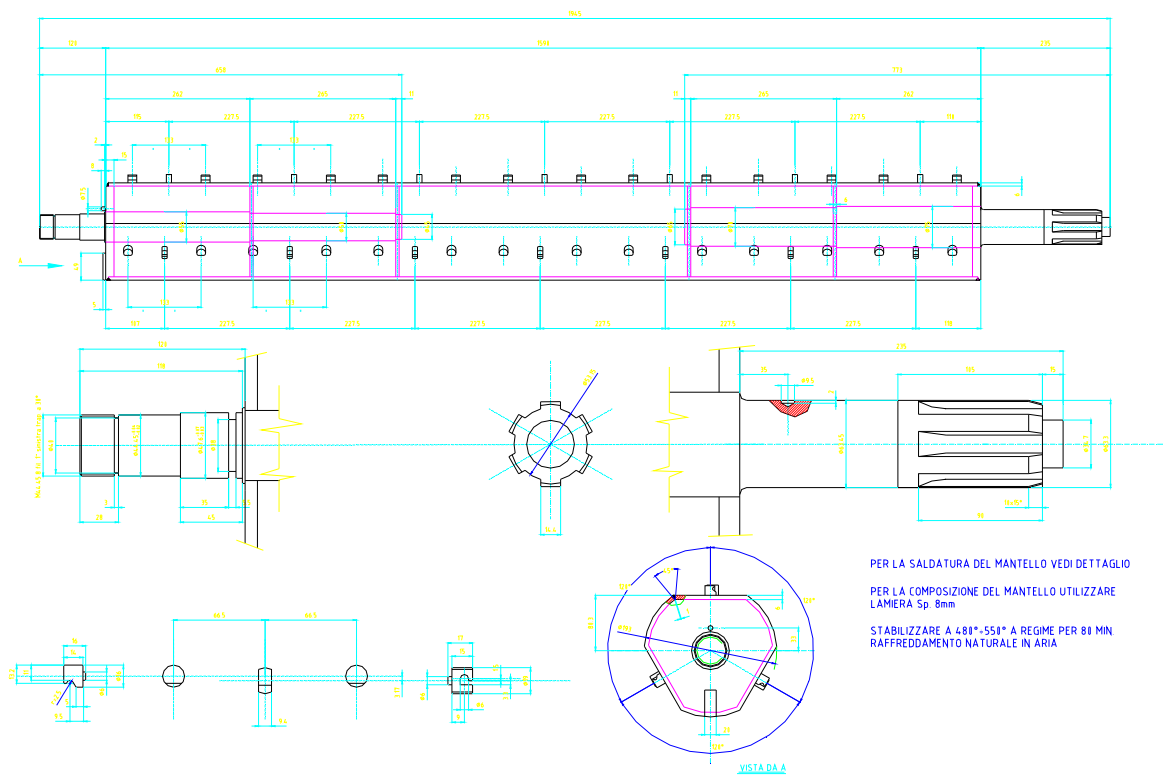
PIPING THROAT COCK



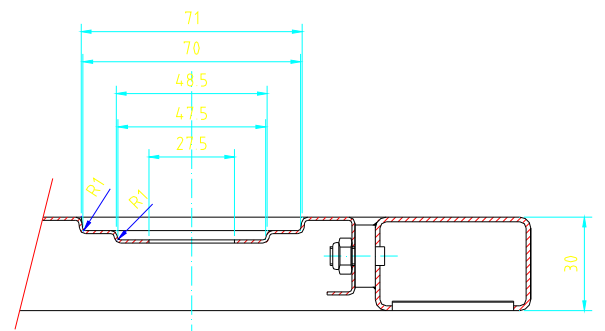
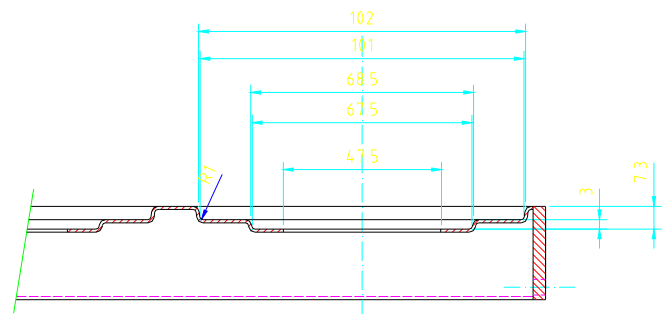
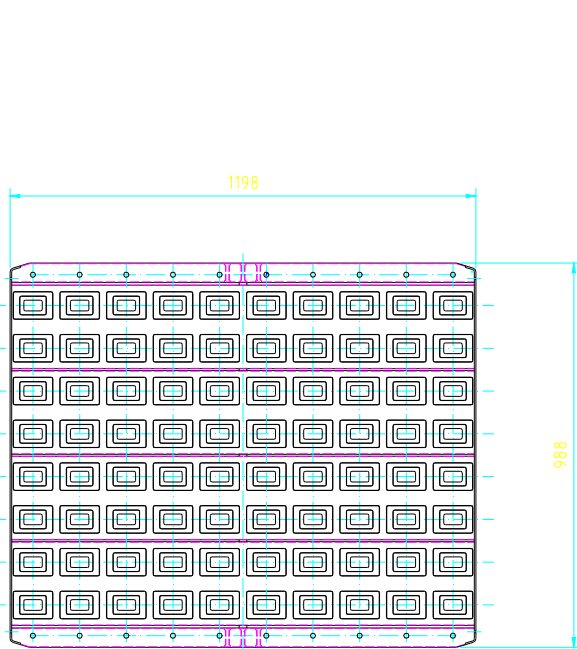
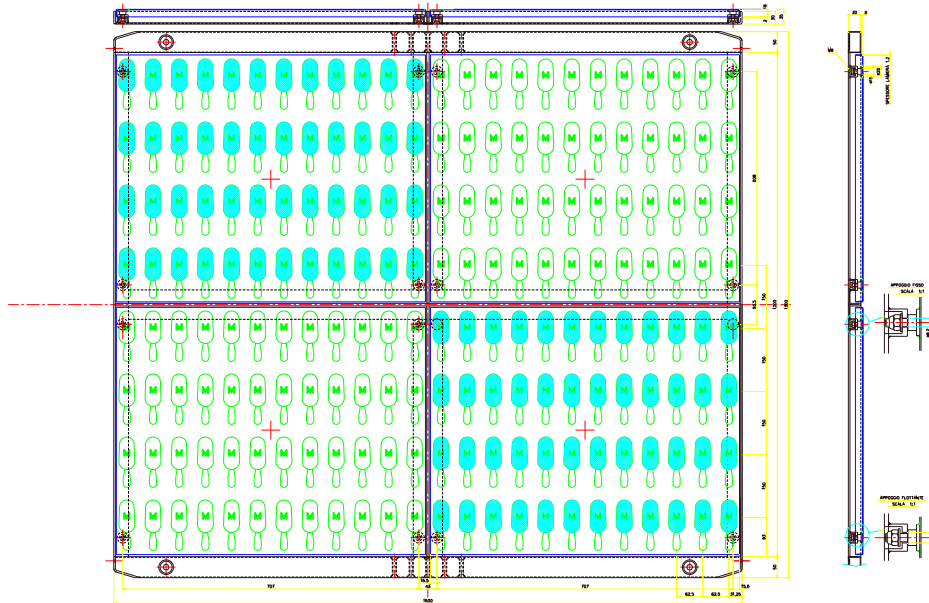
This faucet from 1", 1.5", 2", inserted in a pipeline, throat the passage of the half liquid product



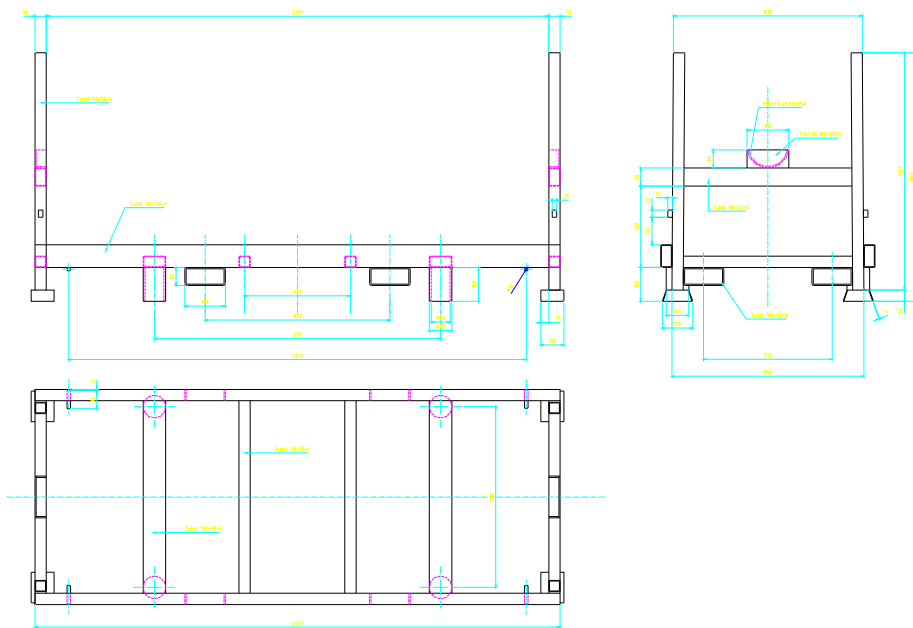
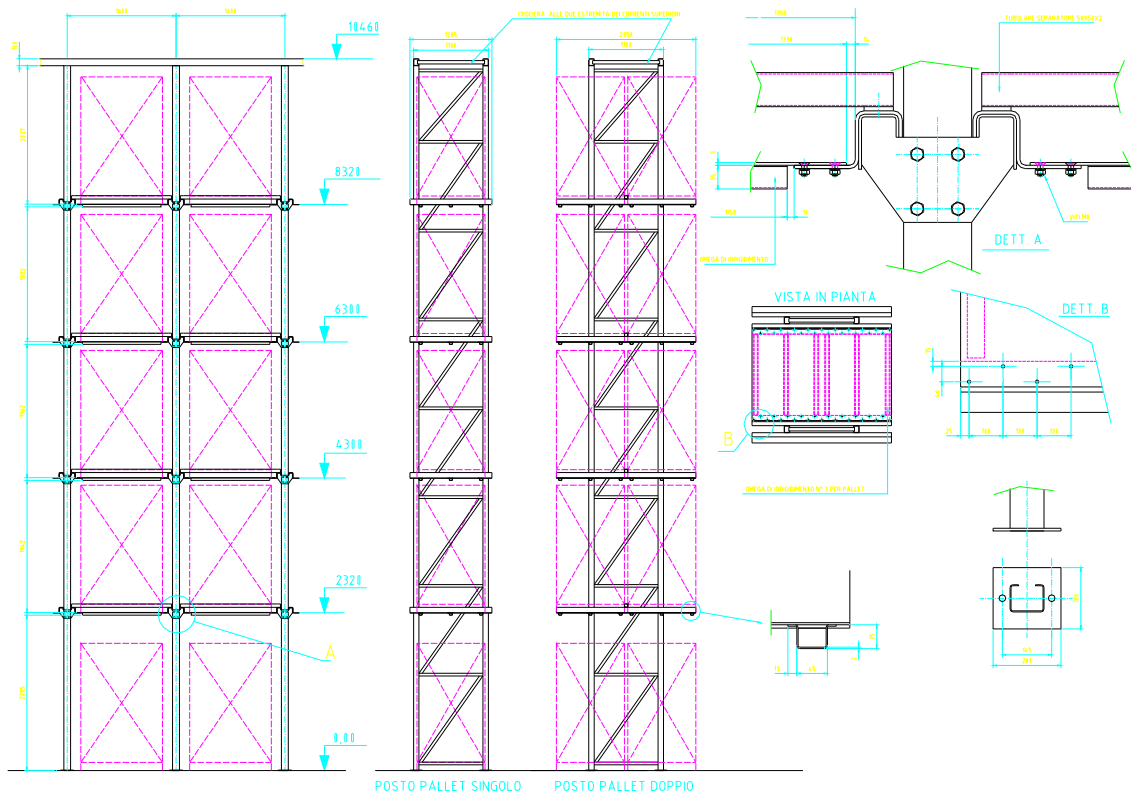
DASHER



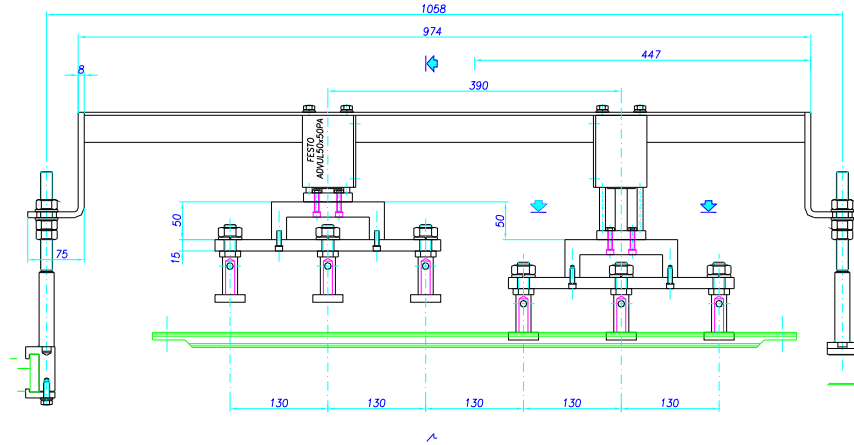
PRODUCT TRANSPORT PLATES



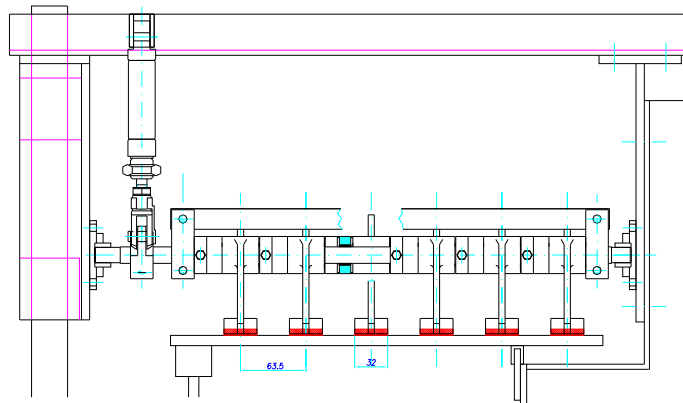
RACK SHELF & PALLETS



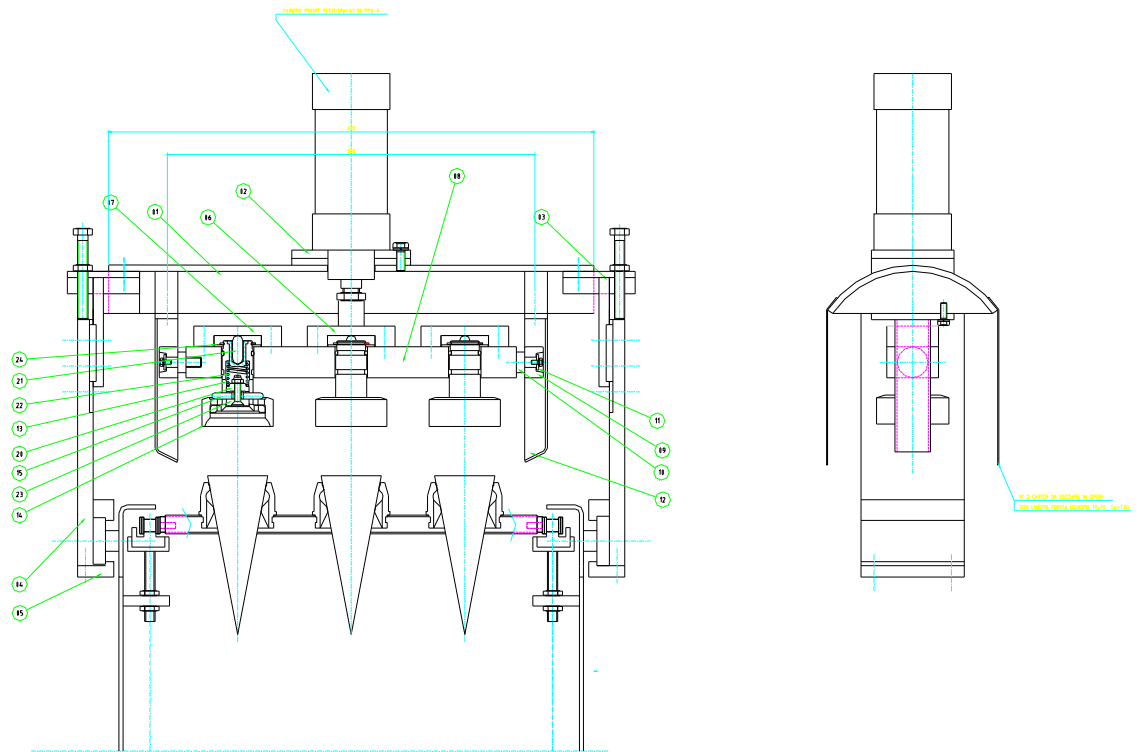
PRESSING GROUP



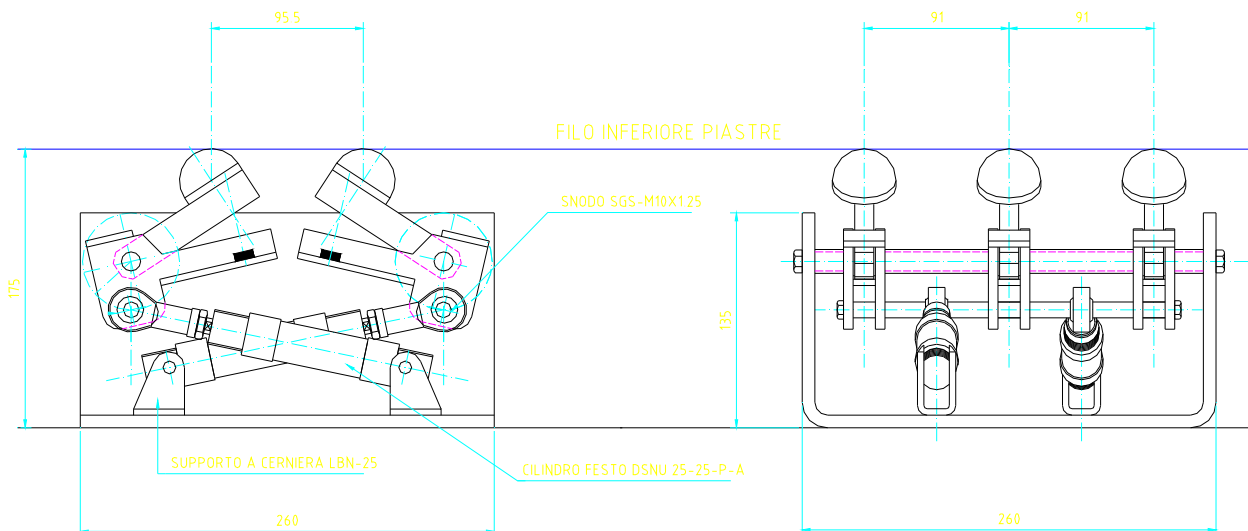
BISCUIT LINER UP



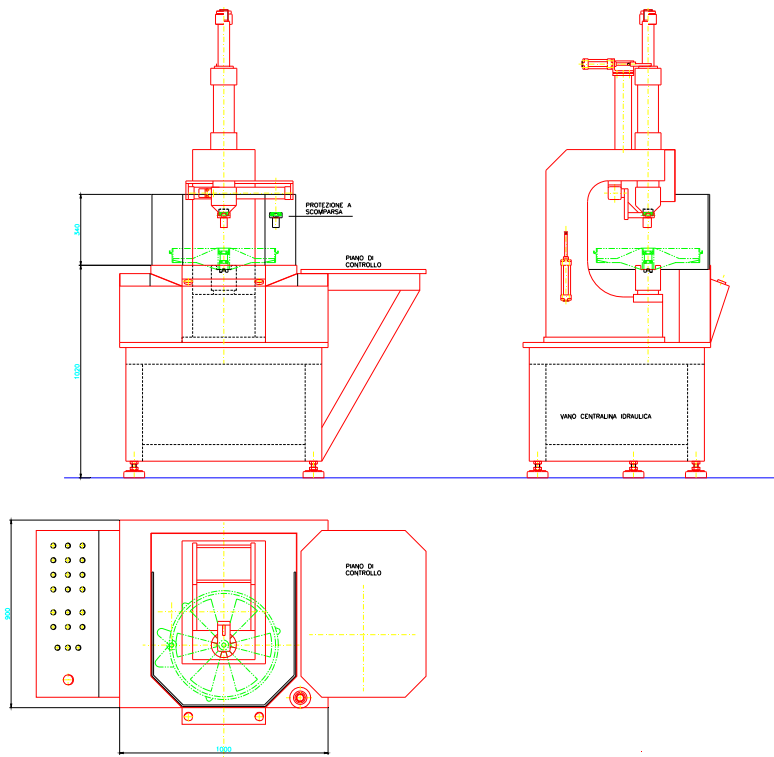
CONES CLENCHER



PERCUSSION HAMMER SHAKE-PRODUCT



BEARINGS FIXING MACHINE



DIPPING TUB



SELECTIVE LASER FUSION (SLM)

Il sistema di lavoro

Il sistema SLM prevede il riporto di sottilissimi strati di polvere d'acciaio. Il Laser provvede a saldare il contorno della forma e successivamente il riempimento. Si tratta di una tecnologia ad accrescimento molto simile, concettualmente, alle tecniche di prototipazione rapida tradizionale.

Rispetto ad altre tecnologie, la Fusione Laser Selettiva (SLM) da noi utilizzata, si differenzia per i materiali utilizzati, la maggior densità (oltre il 99,9%) e la durezza raggiunta, fino a 54 HRC.

Qui a lato un confronto con foto al microscopio, fra il sistema SLM da noi utilizzato e i già conosciuti sinterizzati (SLS).

